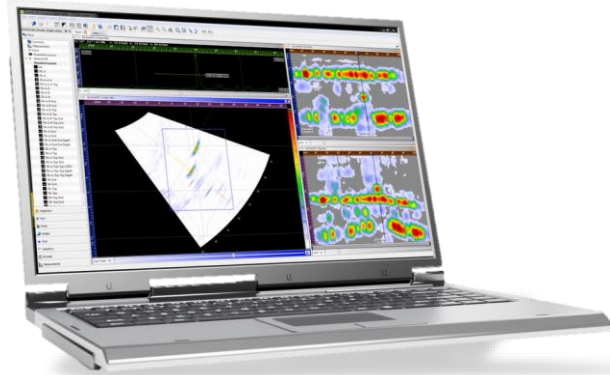




What's New In version 3.9

2015-11-04



prisxxa



STAY UP-TO-DATE !!





Sonatest recommends to upgrade your instruments & software to the latest release

- 3.9 is the latest merged milestone version for the three Sonatest VEO, PRISMA & UTStudio advanced products.
- You will have access to the new features and functionalities to maximize your investment and productivity.
- You will benefit from the latest interface enhancements.
- 3.9 also specifically solves an important quantity of minor and major software bugs, Sonatest recommends to upgrade for a better user experience and maximize productivity.



Reference for New Features & Functionalities in this document



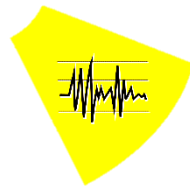
Instrument Conventional UT enhancement



Instrument TOFD enhancement



Instrument Phased Array enhancement



UTStudio software enhancement



Sonatest PRISMA & VEO family enhancements

UT

TOFD

PA





Surface distance excluding X-Offset

UT

- X-Offset correction
- Distance measurements from the front of the wedge





Recent Layout

UT

TOFD

PA

- Recent layout listing
- Manageable
- Up to 10 last layouts kept in memory





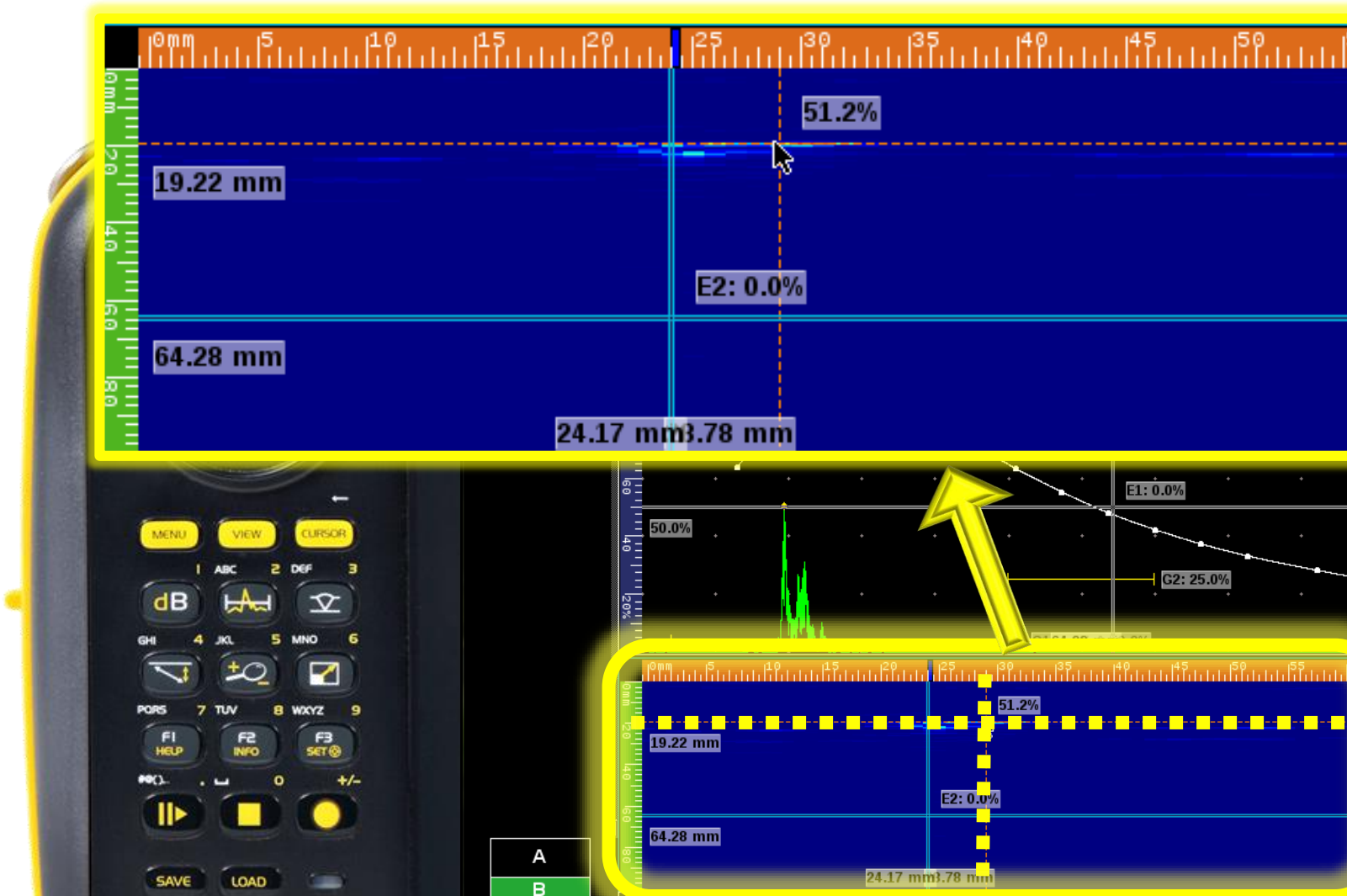
Cross-Hair Mouse

UT

TOFD

PA

- Available when a mouse is connected
- No need for additional analysis cursors



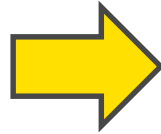


Software Development Kit now available with 3.9

UT

TOFD

PA



Integrator proprietary
software developed
using Amotus SDK
(1 license / company)

Solution / System
site PC + Amotus
DLL
(1 license / PC)

Sonatest instrument
+ Amotus USB
connectivity key for
data acquisition
(1 key / unit serial #)



Encoder Time-based Recording + Duration Parameter

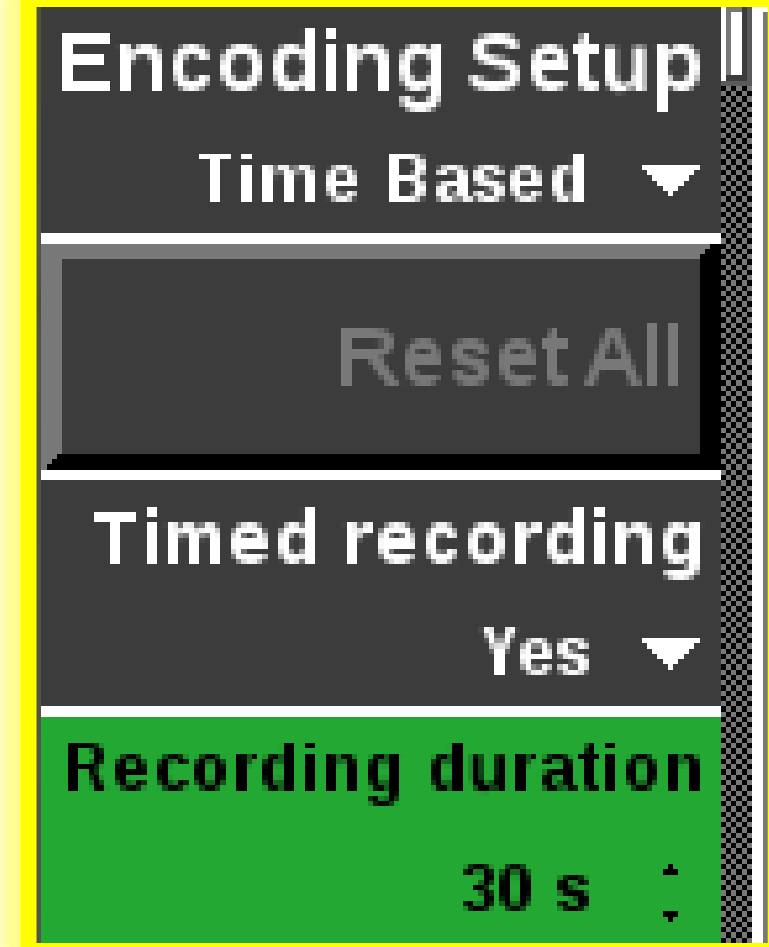
- Set a maximum recording or target encoding
- Useful for demo or test without encoder
- Example:
 $30 \text{ FPS} * 30\text{s}$
 $= 900 \text{ Frames}$



UT

TOFD

PA





Auto-Hide Menu Enhancements

UT

TOFD

PA

- Full screen mode
- Use the large veo & prisma screens
- Multiple bug fixes





About Window

Screen capture available for support

UT

TOFD

PA

- Support Add-on
- System State of the Machine Capture





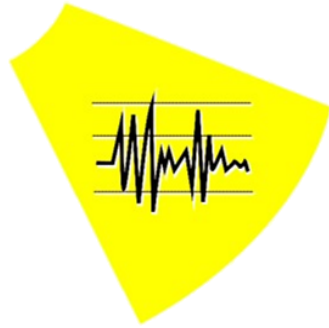
List of Prisma & VEO new features & functionalities

UT

TOFD

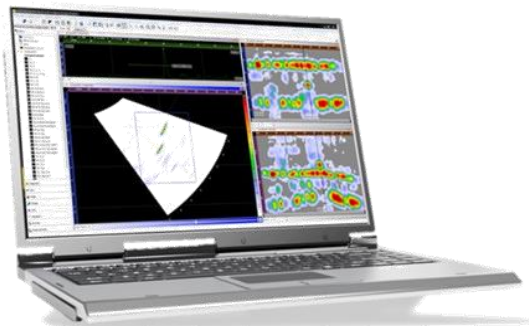
PA

- G-389 Recent layout now available
- G-261 Amotus SDK external app launcher
- G-139 New inspection wizard - change S-Scan start angle 35°
- G-118 Set fixed aspect ratio to false on L-Scan (now wide by default)
- G-109 Change default measure in the measurement bar
- G-64 Add a new measurement from wedge (to include X offset as per D-Series)
- G-53 Update all Layouts / Templates / Examples / New Inspection Wizard
- G-43 Place gate start at 25 mm or 25% in A-scan as default value
- G-38 Crosshair mouse in views of UTDATA file
- G-36 Time-Based recording - Add duration parameter
- G-35 Missed frames should appear in record view in long scan
- Several improvements to the "auto-hide menus" feature
- Various stability & performance optimizations / fixes



UTStudio

optimizes your workflow!



Steps on UTStudio

Steps on instrument



Setup

1

Reporting

4

Post
Analysis

5

Setup

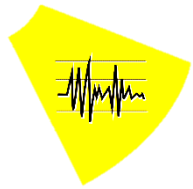
2

Calibration Inspection

3

Reporting

Post
Analysis



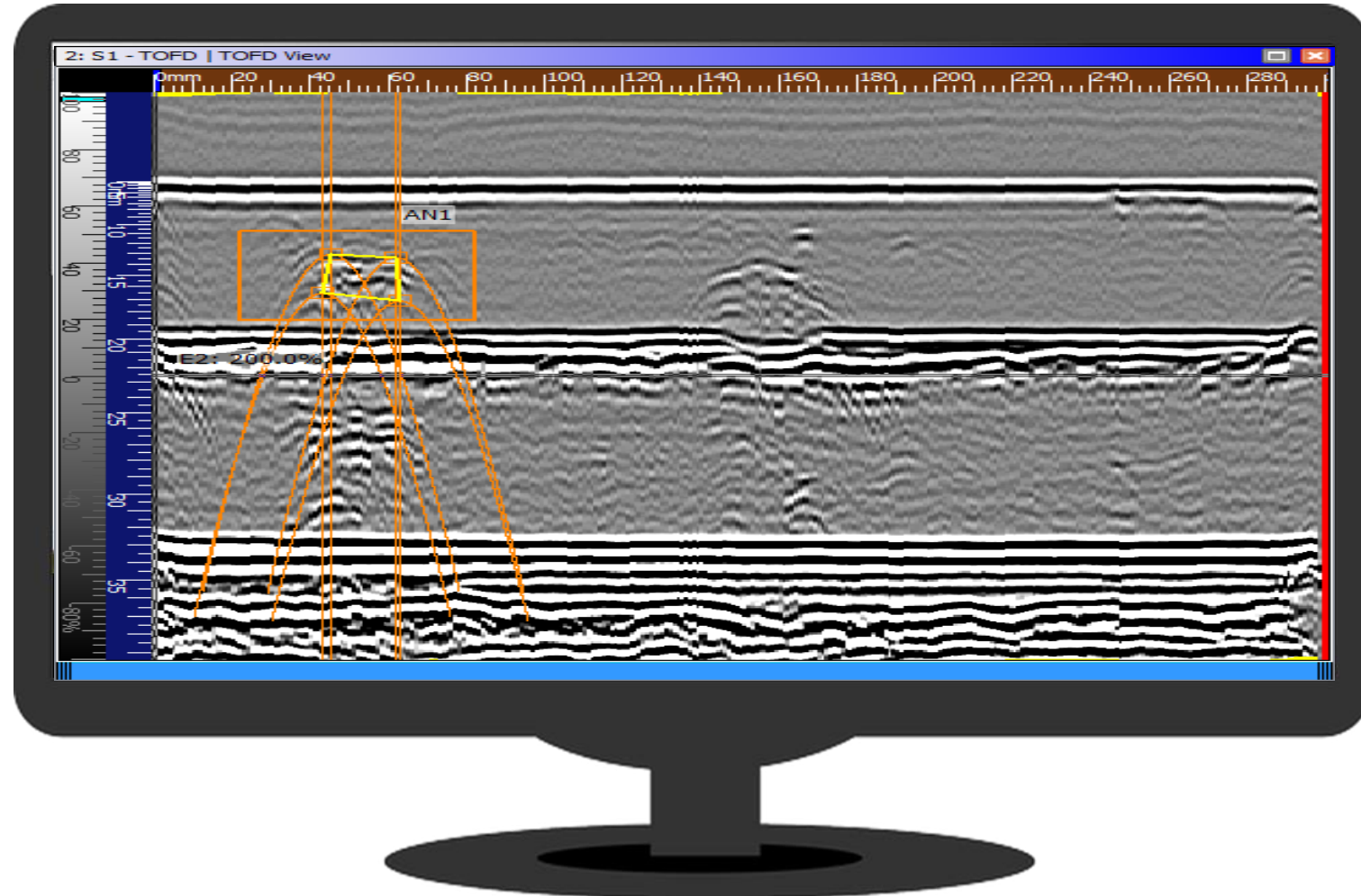
TOFD

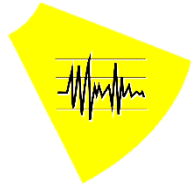
To activate:

1. Box flaw zone
2. Place hyperbolic cursors around defective zone
3. Will be automatically calculated :
 - Depth
 - Scan Distance
 - Area

TOFD Annotations

We Make It Simple





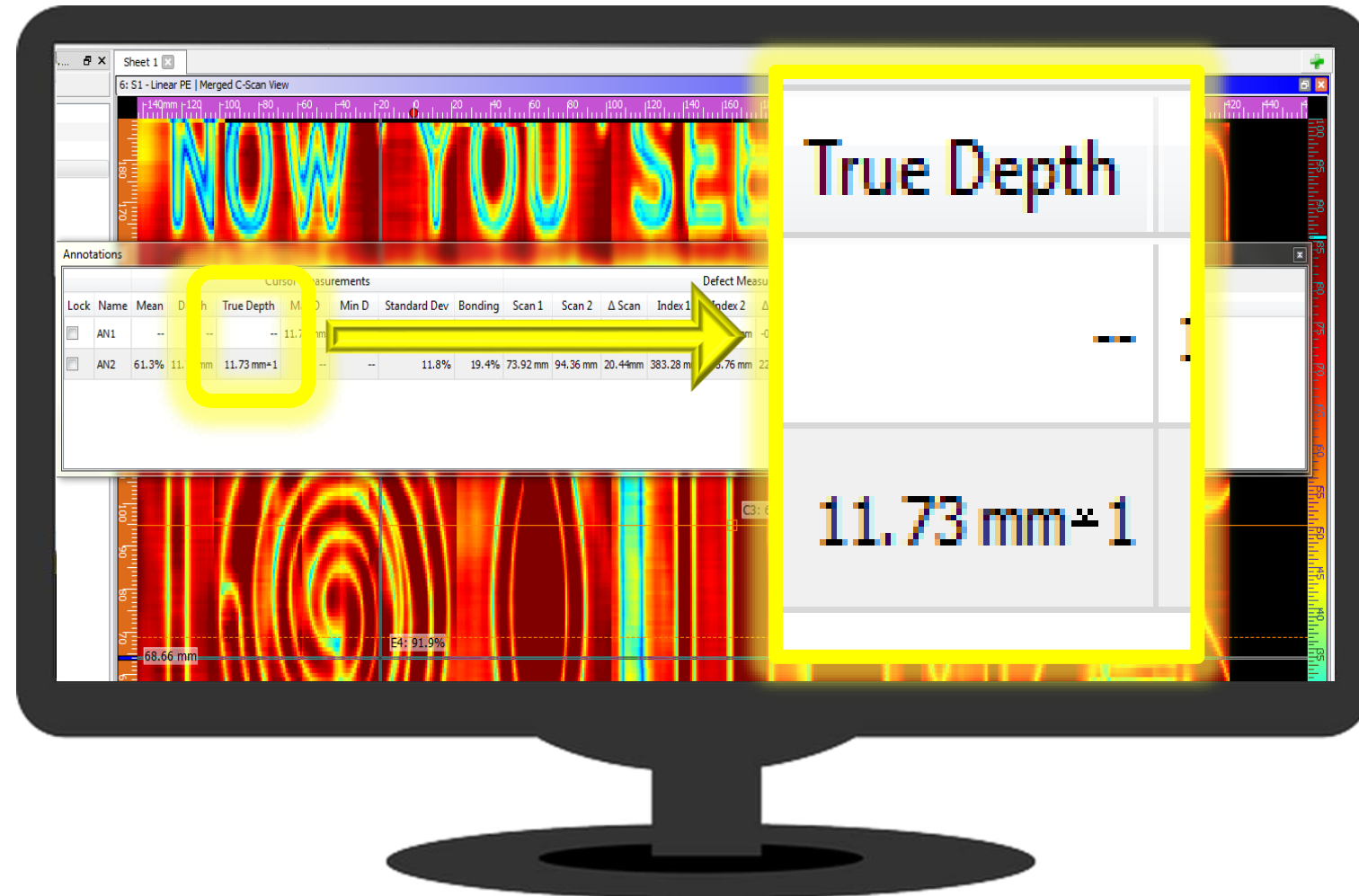
UT

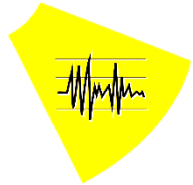
TOFD

PA

- New annotation measurement available
- Now able to show thickness measurement according to part skips

True Depth Annotation





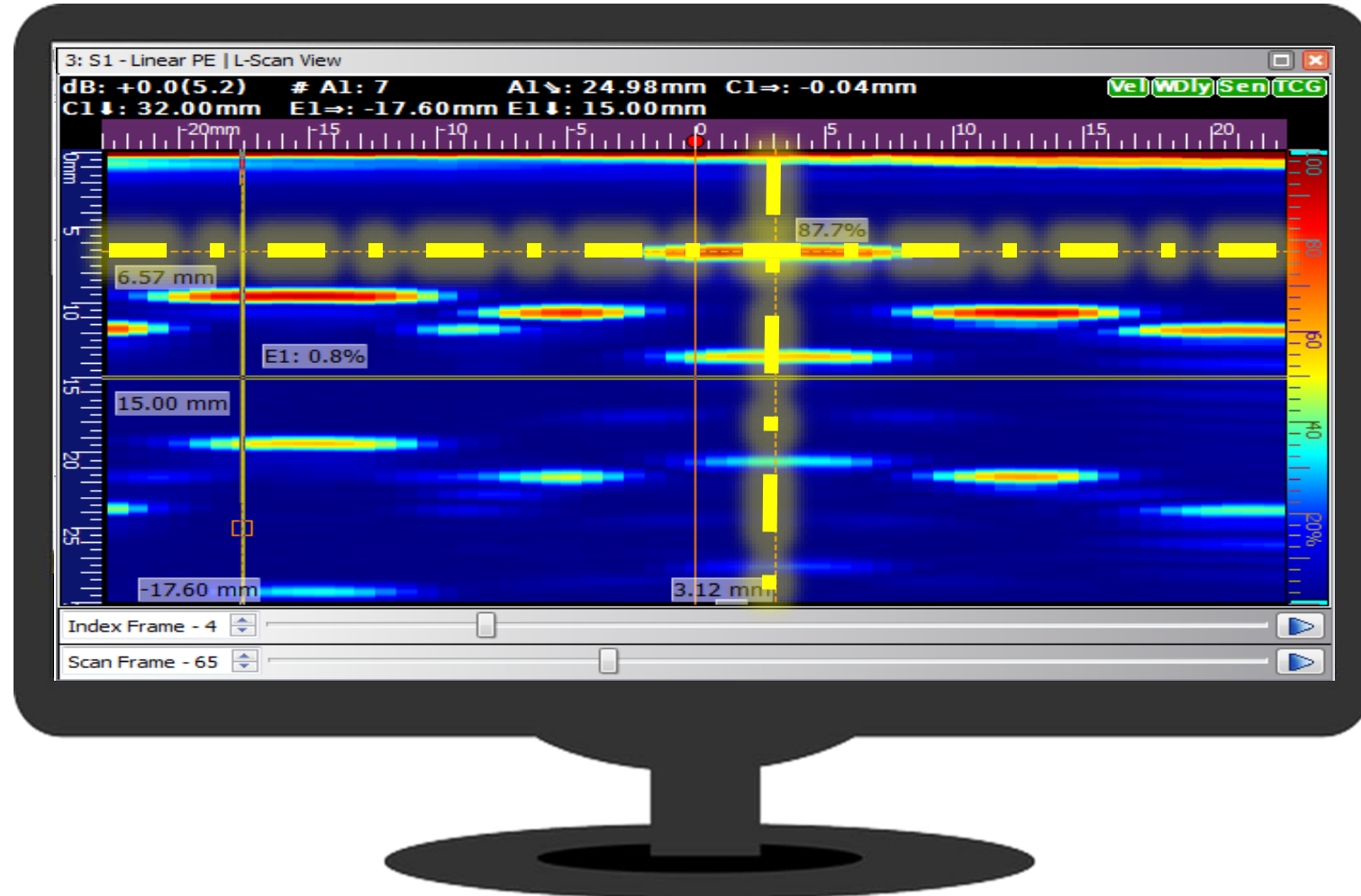
UT

TOFD

PA

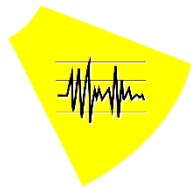
- No need for additional analysis cursors
- Activated when mouse goes over the view
- Display % or depth according to view

Cross-Hair Mouse





List of UTStudio new features & functionalities



UT

TOFD

PA

- G-139 New inspection wizard - change S-Scan start angle 35°
- G-118 Set fixed aspect ratio to false on L-Scan (now wide by default)
- G-79 Add real depth data to annotation table
- G-64 Add a new measurement from wedge (to include X offset as per D-Series)
- G-53 Révision Layout / Templates / Examples / New Inspection Wizard
- G-41 Use hyperbolic cursor for annotations in TOFD
- G-38 Crosshair mouse in views of UTDATA file
- Various stability & performance optimizations / fixes



PROTECT YOUR INVESTMENT

ALWAYS BE UP TO DATE
BENEFIT FROM LATEST IMPROVEMENTS
MAXIMIZE CAPABILITIES & PRODUCTIVITY